

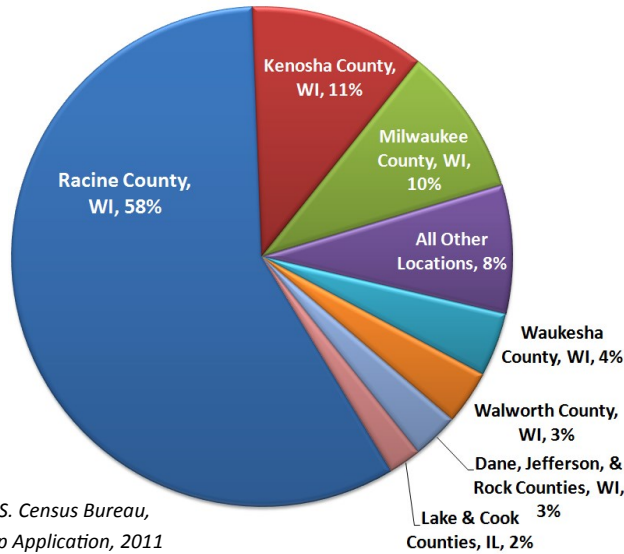


2014 Racine County Snapshot

GROWING BUSINESS | CONNECTING COMMUNITIES | JOB CREATION

Workforce Employed in Racine County

Place of Residence



Source: U.S. Census Bureau, OnTheMap Application, 2011

Employment Status

	2011	2013	2014	Net Change Over	
				1-Year	3-Year
Racine County					
Labor Force	100,552	97,826	100,103	2,277	-449
Unemployment Rate	9.1	8.6	6.8	-1.8	-2.3
Racine, City					
Labor Force	37,985	37,056	36,607	-449	-1,378
Unemployment Rate	13.3	12.0	8.5	-3.5	-4.8
Outside City of Racine					
Labor Force	62,567	60,770	63,496	2,726	929
Unemployment Rate	6.5	6.5	5.7	0.0	-0.8
Caledonia, Village					
Labor Force	13,051	12,750	13,599	849	548
Unemployment Rate	3.7	3.7	5.5	1.8	1.8
Mt. Pleasant, Village					
Labor Force	14,407	13,657	14,161	504	-246
Unemployment Rate	9.3	9.0	5.6	-3.4	-3.7
Wisconsin					
Labor Force	3,080,399	3,074,589	3,093,918	19,329	13,519
Unemployment Rate	7.8	6.7	5.5	-1.2	-2.3
United States					
Labor Force	153,617,000	155,389,000	155,922,000	533,000	2,305,000
Unemployment Rate	8.9	7.4	6.2	-1.2	-2.7

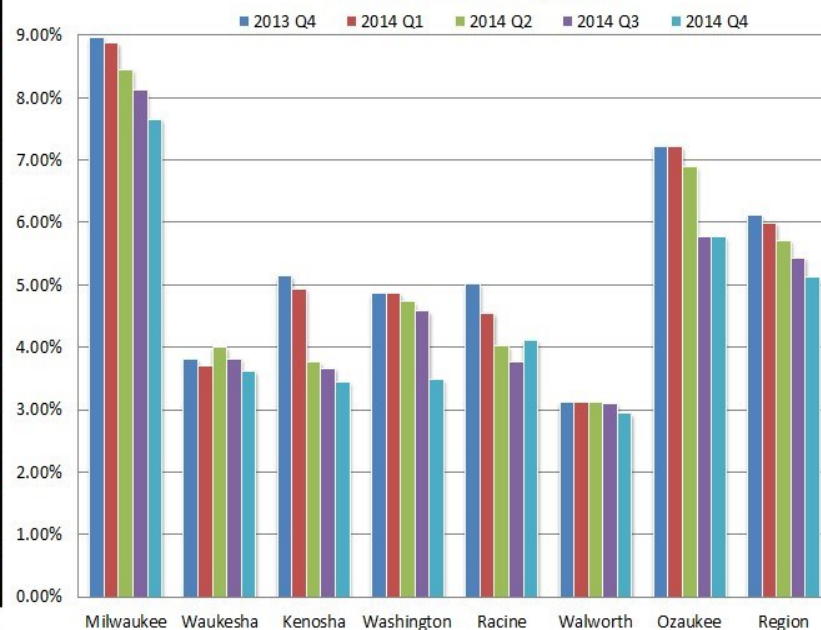
Source: Wisconsin Department of Workforce Development; 2008-2012 American Community Survey; Not Seasonally Adjusted

Population

Area	2000	2013	%
Racine County	188,831	195,174	3.4
Racine, City	81,855	78,700	-3.9
Burlington, City	9,936	10,492	5.6
Caledonia, Village	23,614	24,680	4.5
Elmwood Park, Village	474	499	5.3
Mount Pleasant, Village	23,142	26,180	13
North Bay, Village	260	238	-8.5
Rochester, Village	2,254	3,685	63
Sturtevant, Village	5,287	6,992	32
Union Grove, Village	4,322	4,907	14
Waterford, Village	4,048	5,360	32
Wind Point, Village	1,853	1,711	-7.7
Burlington, Town	6,384	6,448	1
Dover, Town	3,908	3,997	2.3
Norway, Town	7,600	7,961	4.8
Raymond, Town	3,516	3,894	11
Waterford, Town	5,938	6,343	6.8
Yorkville, Town	3,291	3,087	-6.2
Wisconsin	5,363,675	5,717,110	6.6
United States	281,421,906	316,128,839	12

Source: US Census Bureau, Wisconsin Department of Administration Demographic Services

Industrial Vacancy Rates



Source: Xcelligent

Assistance

Incentives

Workforce

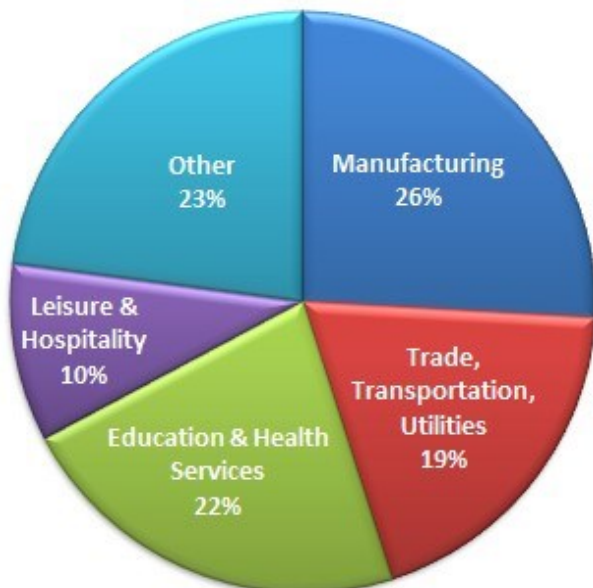
Locations



2014 Racine County Snapshot

GROWING BUSINESS | CONNECTING COMMUNITIES | JOB CREATION

Largest Sectors by Employment



Source: Wisconsin Department of Workforce Development

Prominent Industries

- Electrical Equipment, Appliance, and Component Mfg
- Chemical Manufacturing
- Machinery Manufacturing
- Fabricated Metal Product Manufacturing
- Nonmetallic Mineral Product Manufacturing
- Paper Manufacturing
- Miscellaneous Manufacturing
- Plastics and Rubber Products Manufacturing
- Transportation Equipment Manufacturing
- Food Manufacturing

Sources: QCEW Employees-EMSI 2014; RCEDC

Average Employment Change for Racine County, M7 Region and Wisconsin: Year 2013 to Year 2014

Industry	Racine County				M7 Region				Wisconsin			
	2013 Avg Emp	2014 Avg Emp	#	%	2013 Avg Emp	2014 Avg Emp	#	%	2013 Avg Emp	2014 Avg Emp	#	%
Natural Resources & Mining	286	290	4	1.4%	2,078	2,180	102	4.9%	27,656	28,712	1,056	3.8%
Construction	2,122	2,330	208	9.8%	29,330	31,575	2,245	7.7%	100,051	104,685	4,634	4.6%
Manufacturing	18,554	18,882	328	1.8%	153,130	153,984	854	0.6%	455,576	460,794	5,218	1.1%
Trade, Transportation, Utilities	13,677	13,992	315	2.3%	177,030	178,429	1,399	0.8%	528,540	532,908	4,368	0.8%
Information	S	S	NA	NA	S	S	NA	NA	48,899	49,538	639	1.3%
Financial Activities	2,644	2,504	-140	-5.3%	56,068	55,624	-444	-0.8%	149,229	145,876	-3,353	-2.2%
Professional & Business Services	6,158	6,226	68	1.1%	134,276	134,936	660	0.5%	298,745	306,292	7,547	2.5%
Education & Health Services	16,104	16,146	42	0.3%	222,622	226,086	3,464	1.6%	608,199	612,051	3,852	0.6%
Leisure & Hospitality	7,117	7,213	96	1.3%	97,067	98,432	1,365	1.4%	270,302	271,629	1,327	0.5%
Other Services	1,931	1,920	-11	-0.6%	33,400	32,876	-524	-1.6%	85,322	83,850	-1,472	-1.7%
Public Administration	3,432	3,435	3	0.1%	38,919	38,691	-228	-0.6%	137,457	138,739	1,282	0.9%

Source: Wisconsin Department of Workforce Development

* 2013 Racine County Data Suppressed: Information Industry

* 2014 Milwaukee, Ozaukee, Walworth & Washington County Data Suppressed: Information Industry

* 2013 Milwaukee & Walworth County Data Suppressed: Information Industry; Unclassified Industry

M7 Region includes Kenosha, Racine, Milwaukee, Ozaukee, Walworth, Washington & Waukesha Counties

Questions? Please contact:

Rachana Kothari, Research Specialist

Racine County Economic Development Corporation

rkothari@racinecountyedc.org or 262-898-7438

Assistance

Incentives

Workforce

Locations