

BURLINGTON MANUFACTURING & OFFICE PARK



Site Overview



Municipality: City of Burlington

Zoning: Manufacturing & Office Park District

Available Acres: 28

Asking Price Per Acre: \$31,000 or \$27,500 over 3 acres

Note: Phase II expansion includes over 100 acres

 - Business Park Location

Distance to Closest



18 miles to Interstate 94
Direct Access to State Highway 83



4 miles to Burlington Municipal Airport
32 miles to Milwaukee's Mitchell International
63 miles to Chicago's O'Hare International



Area serviced by Canadian National rail



36 miles to Milwaukee Port
89 miles to Illinois International Port

Available Incentives



- State Job Creation & Retention Tax Credits
- Fixed Low-Interest Loans
- Workforce Assistance & Grants
- State Manufacturing Tax Credit (direct)
- State Manufacturing Tax Exemptions

Community Profile



**Within 10 miles of site*

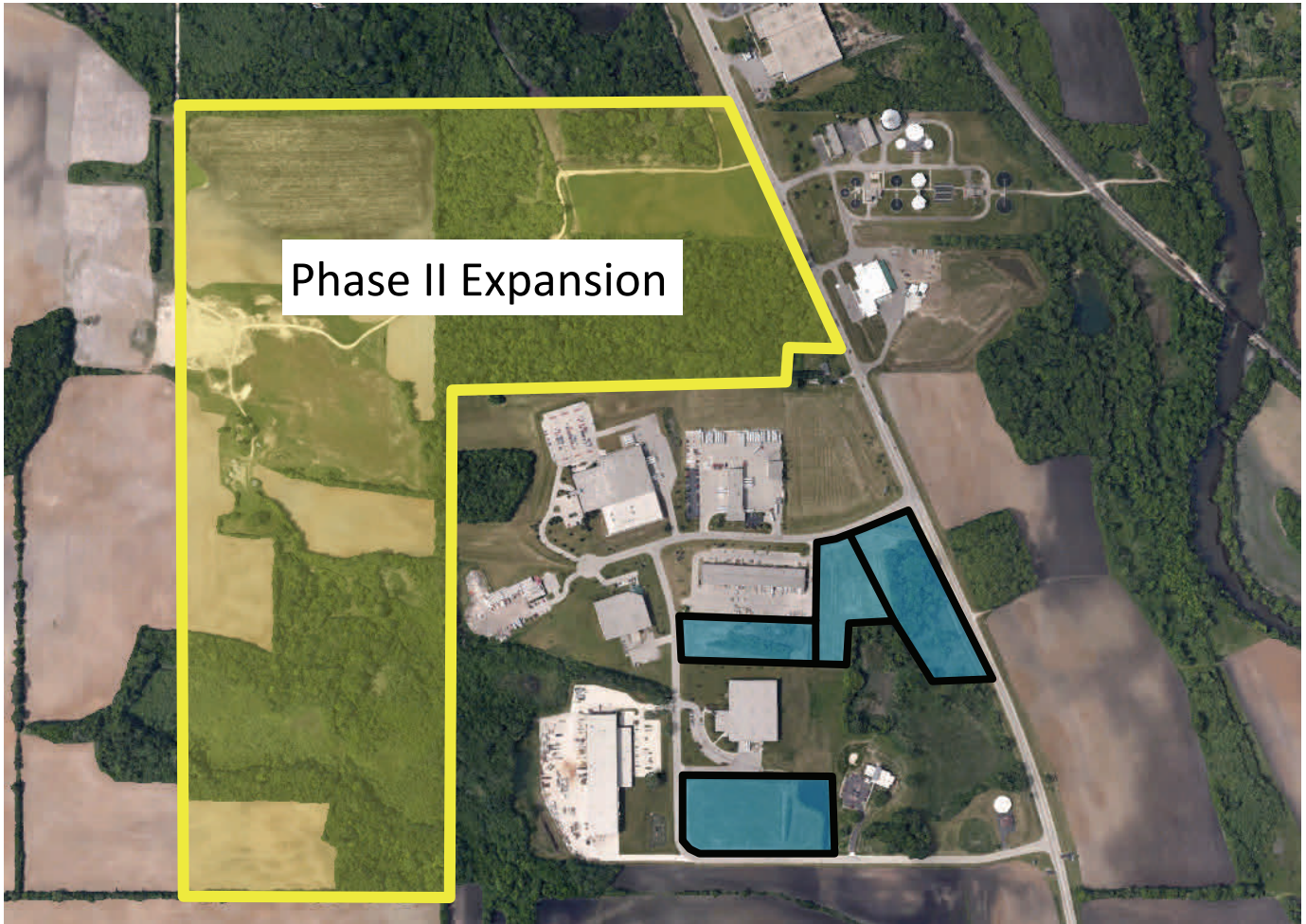
Population: 67,970

Labor Force: 36,767

Unemployment Rate: 8.32%

Mill Rate: \$24.08 per \$1,000





Contact: Laura Million, Business Development Manager
Racine County Economic Development Corporation
262-898-7530
LMillion@racinecountyedc.org

Available Services



Sanitary Sewer:

Burlington Wastewater Control Facility
262-539-3770

Public Water:

Burlington Water Department 262-539-3770

Electric Power & Natural Gas:

WE Energies 800-242-9137

Telecommunications:

Service available through various providers.

Prominent Employers in the Area



- Aurora Healthcare Hospital
- Echo Lake Foods
- Lavelle Industries
- LDV
- Nestle
- Quad Graphics



For More Information Contact:

Jordan Brown, Business Recruitment Specialist
JBrown@racinecountyedc.org | 262.898.7444