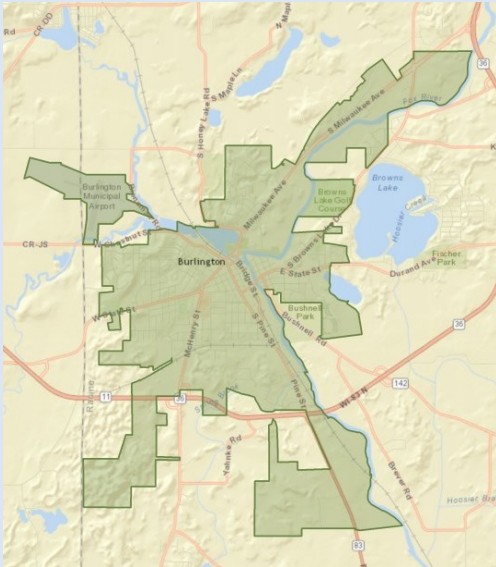


# Burlington Snapshot



## Current Population

# 10,495

### About:

Known as the Chocolate City, Burlington is home to nearly 10,500 residents and over 750 businesses. Centrally located between Milwaukee and Chicago, the City serves as the commerce hub of western Racine County. The community is served by four major highways and two interstates. The City's central location, historic downtown, two business parks, improved infrastructure and broad labor force makes Burlington a great place to live, work, and play.

### Government

Mayor	Robert Miller
City Administrator	Carina Walters
County Executive	Jonathan Delagrave

### Tax Information

Mill Rate	\$23.38 per thousand
Corporate Income Tax	7.9%
Sales Tax	5.1%
Individual Income Tax	4.0% - 7.65%

### Utilities

Water/Sewer	Burlington Municipal Waterworks
Gas	WE Energies
Electric	WE Energies
Garbage	John's Disposal

## Labor Force & Employment

### Unemployment Rate

# 9.7%

 (Dec 15)

### Median Household Income

# \$54,238

### Total Employees

# 10,166

### Labor Shed Potential (30 Min. Drive Time)

# 146,316

### Major Employers

Company	Industry
Aurora Healthcare Hospital	General Medical and Surgical
Nestle	Chocolate/Confectionery
Burlington School District	Elementary/Secondary School
Wal-Mart Supercenter	Department Stores
Ardagh	Glass Container Manufacturing
Echo Lake Foods	Cereal Breakfast Foods
Lavelle Industries	Rubber Product Manufacturing
LDV	Special Vehicles Manufacturing & Design
Packaging Corp. of America	Corrugated & Solid Fiber Box Manufacturing
Quad Graphics	Commercial Lithographic Printing

### Largest Employment Sectors

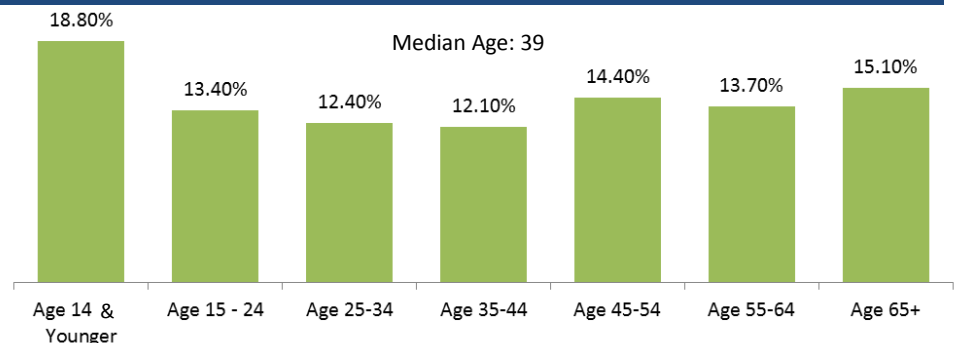
Rank	Sector	Employed	Percent	U.S.
1	Healthcare & Social Assistance	2,394	23.5%	13.6%
2	Manufacturing	1,635	16.1%	8.0%
3	Retail Trade	1,539	15.1%	13.6%
4	Accommodation & Food Services	700	6.9%	8.8%
5	Other Services (Except Public Admin)	690	6.8%	5.5%

### Labor Force Commuting Patterns

Live OUTSIDE Burlington and Commute INTO Burlington	6,594
Live IN Burlington and Commute OUT of Burlington	4,220
Live and Work WITHIN Burlington	1,476

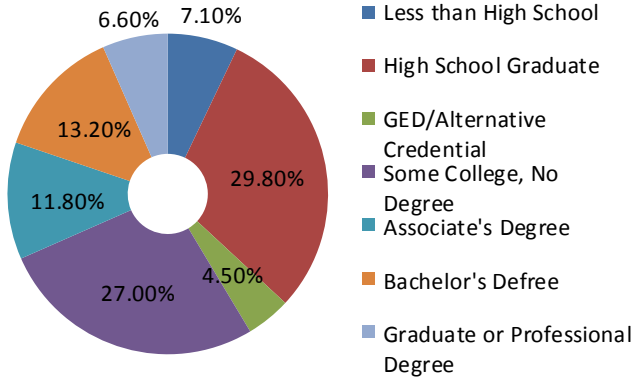
Source: CensusOnTheMap

### Demographics





### Educational Attainment



#### Closest Institutions of Higher Education

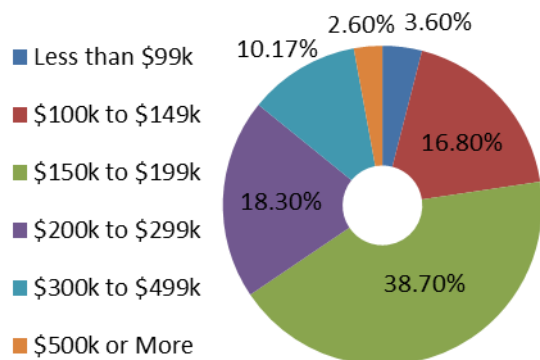
Institute	Distance from Downtown	Type	Enrollment	
			Undergrad	Graduate
Gateway Tech. College (Burlington Campus)	~ 1.9 Miles	2 Yr.	~ 721	N/A
(Elkhorn Campus)	15.0 Miles		1,606	
(Kenosha Campus)	24.1 Miles		7,410	
UW-Parkside	24.4 Miles	4 Yr.	4,489	128
Carthage College	26.7 Miles	4 Yr.	2,500	-
UW-Whitewater	33.0 Miles	4 Yr.	10,971	1,188
UW-Milwaukee	38.6 Miles	4 Yr.	23,108	4,934

### Housing

#### Housing Summary

Total Housing Units	4,567
Number of Households	4,297
Average Household Size	2.41
Owner-Occupied Housing	55.30%
Renter-Occupied Housing	38.80%
Median Home Value	\$188,294

#### Housing Value



### Transportation/ Mobility

#### Avg Commute Time (Mins)

**40** to Downtown Racine  
**50** to Milwaukee  
**70** to Chicago

#### Access to

**4** Major Highways (83, 36, 11, 142)  
**2** Major Interstates (43,94)



#### Trucking Services

**152** Warehouse and trucking establishments in Racine



#### Rail Services

Area rail service provided by Canadian National Railway, Canadian Pacific Railway and Union Pacific Railroad. Passenger rail services provided by Amtrak located 30 minutes east of Burlington.



#### Air Services

Close proximity to two International Airports: 21 miles to the south of Milwaukee's General Mitchell International Airport and 70 miles to the north Chicago's O'Hare International Airport. Also served by three smaller airports: Burlington Municipal Airport, John H. Batten Field in Racine and Sylvania Airport in Sturtevant.

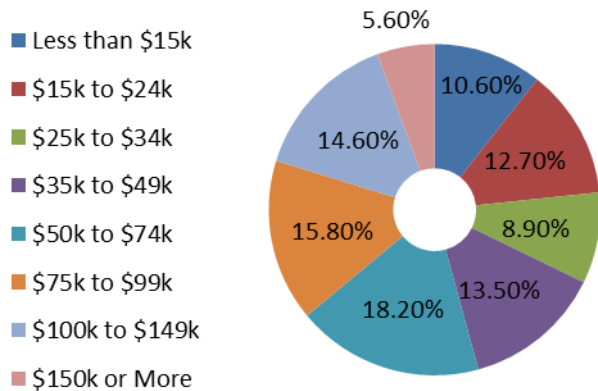


#### Sea Port Services

The Port of Milwaukee is located 36 miles to the northeast.



#### Household by Income



#### More Information

City of Burlington	<a href="http://www.burlington-wi.gov">www.burlington-wi.gov</a> Phone: 262-342-1161
Racine County Economic Development	<a href="http://www.racinecountyedc.org">www.racinecountyedc.org</a> Phone: 262-898-7432
Burlington Chamber	<a href="http://www.burlingtonchamber.org">www.burlingtonchamber.org</a> Phone: 262-763-6044

